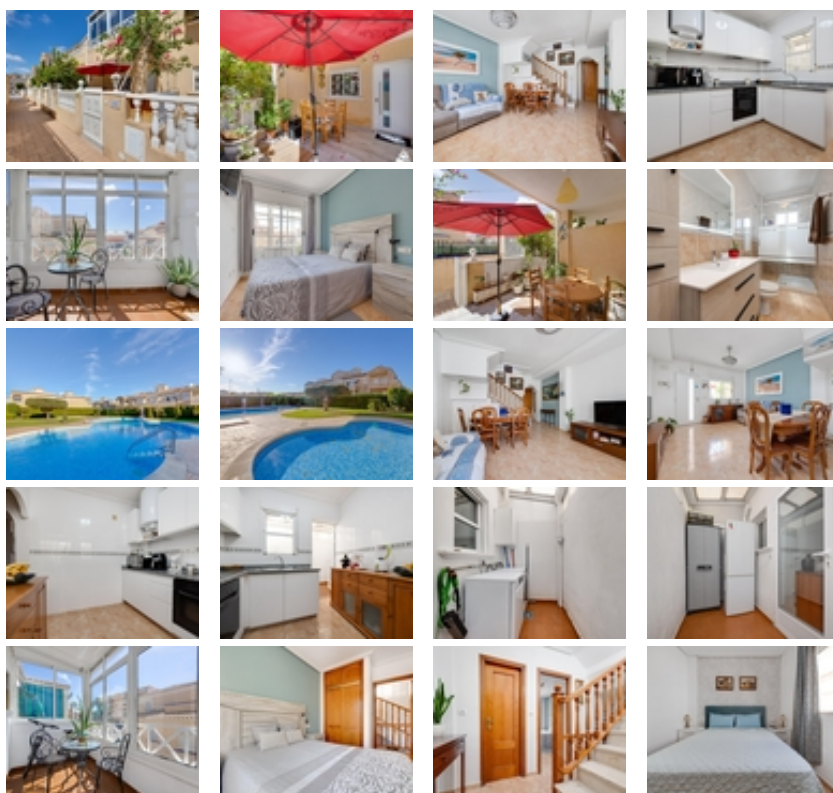


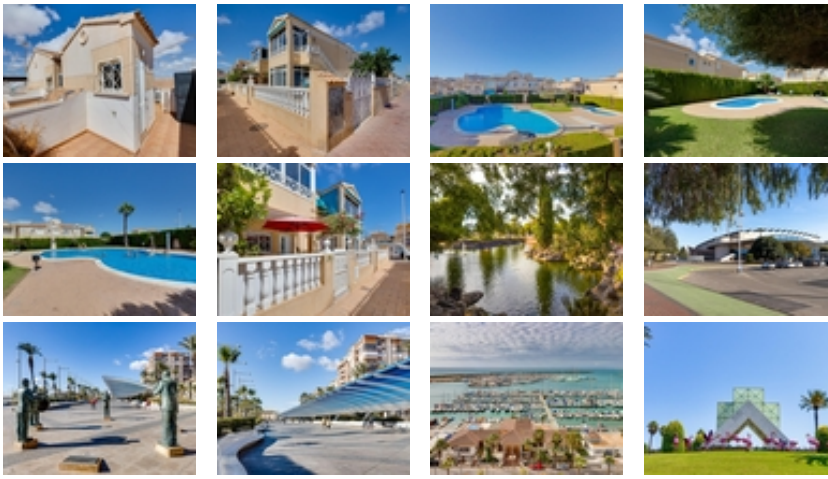


Ref. N:C2060JR/1142

€ 162 000

- Bedrooms: 2
- Bathrooms : 2
- S: 75m²
- Land: 15m²
- Design and Interior
 - built-in wardrobes
 - Equiped Kitchen
- Territory
 - Community Garden
 - Public swimming pool
- Distance
 - Beach:1.5 km. m.





Discover this charming duplex chalet located in the heart of Residencial Europa, an ideal place to live all year round. On the ground floor, you are welcomed by a cozy front garden of approximately 15 m², perfect for enjoying the Mediterranean climate. The spacious living-dining room is ideal for relaxing or entertaining guests, while the independent kitchen is fully equipped and includes a practical enclosed back patio. In addition, there is a convenient guest toilet on this floor.~~Heading upstairs, you will find two bright bedrooms, one of which features a beautiful glazed terrace where you can delight in the views of the natural surroundings. This floor also has a complete bathroom equipped with all the necessary amenities.~~To complete this wonderful property, enjoy the additional private solarium of about 15 m², the perfect space for sunbathing or hosting barbecues! The community offers access to a refreshing swimming pool, perfect during the warmer months, and all essential services are within easy reach. Don't miss this unique and exclusive opportunity to make your dreams come true and invest in quality of life!~~The price does not include fees or taxes.~