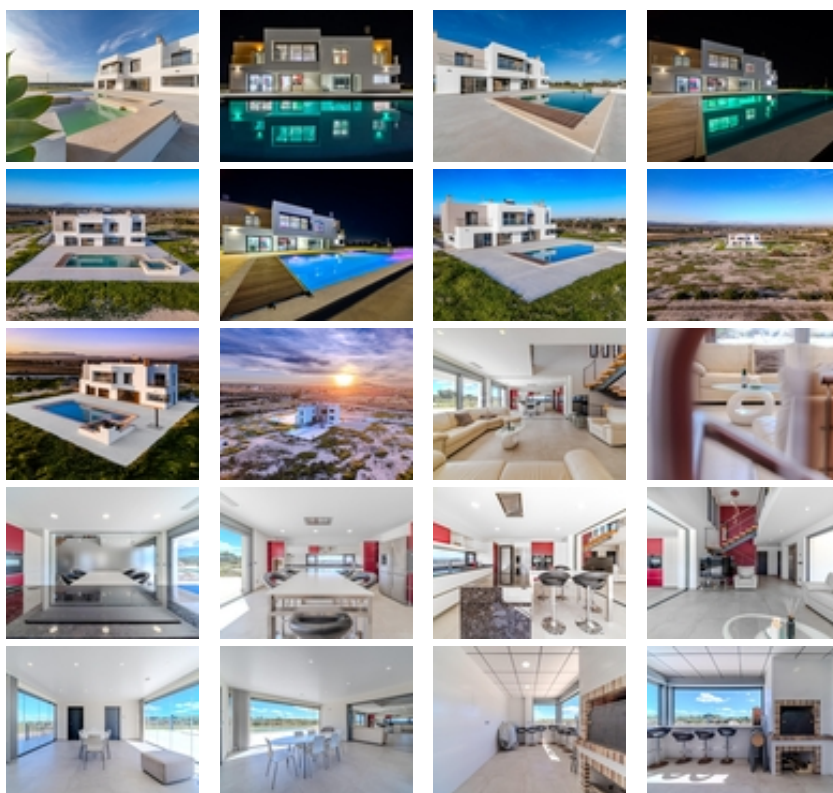


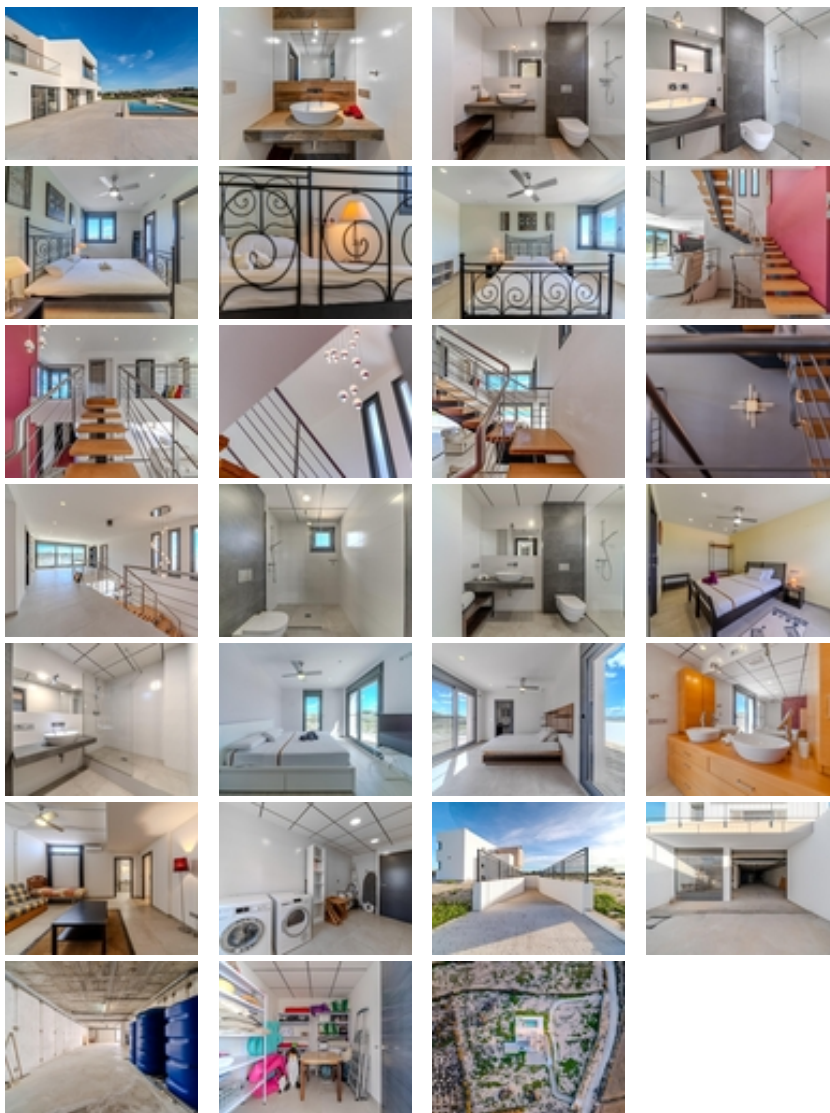


Ref. N:DMRE38/5531

**€ 1 150 000**

- Bedrooms: 5
- Bathrooms : 4
- S: 505m<sup>2</sup>
- Land: 10602m<sup>2</sup>
- Design and Interior
  - built-in wardrobes
  - Jacuzzi
  - Furniture
- Layout and decoration
  - Storeroom
  - Laundry
  - Basement
  - Storage room
- Territory
  - Alarm
  - Elevator
  - Barbacue area
- Distance
  - Beach:4 km. m.





Nestled in La Marina del Pinet (Elche, southern Alicante), this stunning contemporary-style villa was built in 2016 on an expansive 10,600 m<sup>2</sup> plot, offering absolute tranquility and privacy. With optimal sun exposure throughout the day, it boasts 360° panoramic views of the countryside and surrounding mountains.~~Its strategic location ensures excellent connectivity: just 5 km from the beach, 3 km from La Marina village, 20 km from Elche and Torrevieja, and 25 km from Alicante Airport.~~