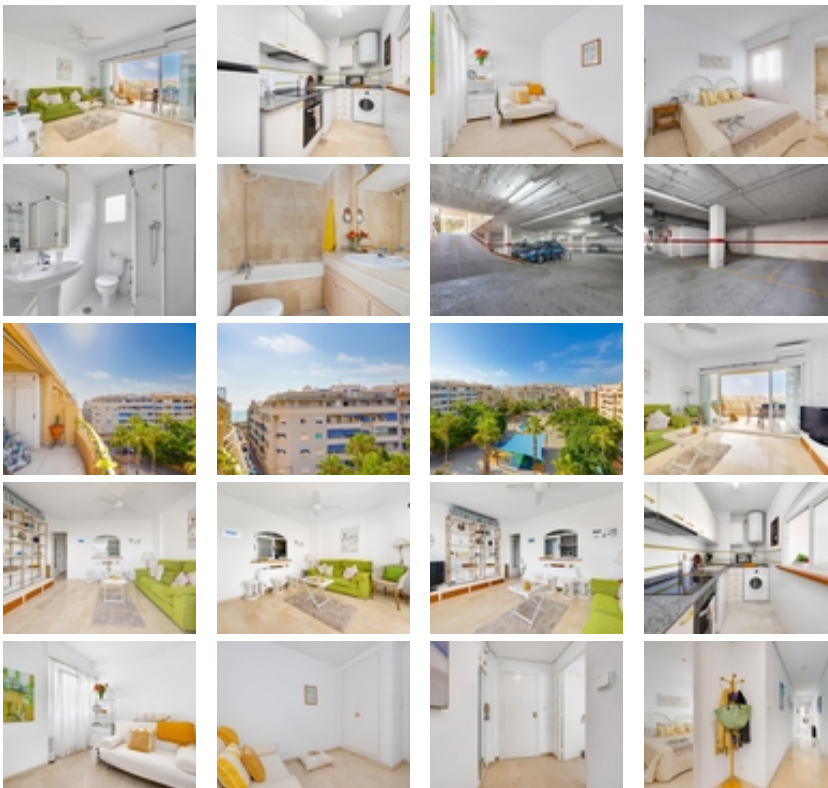


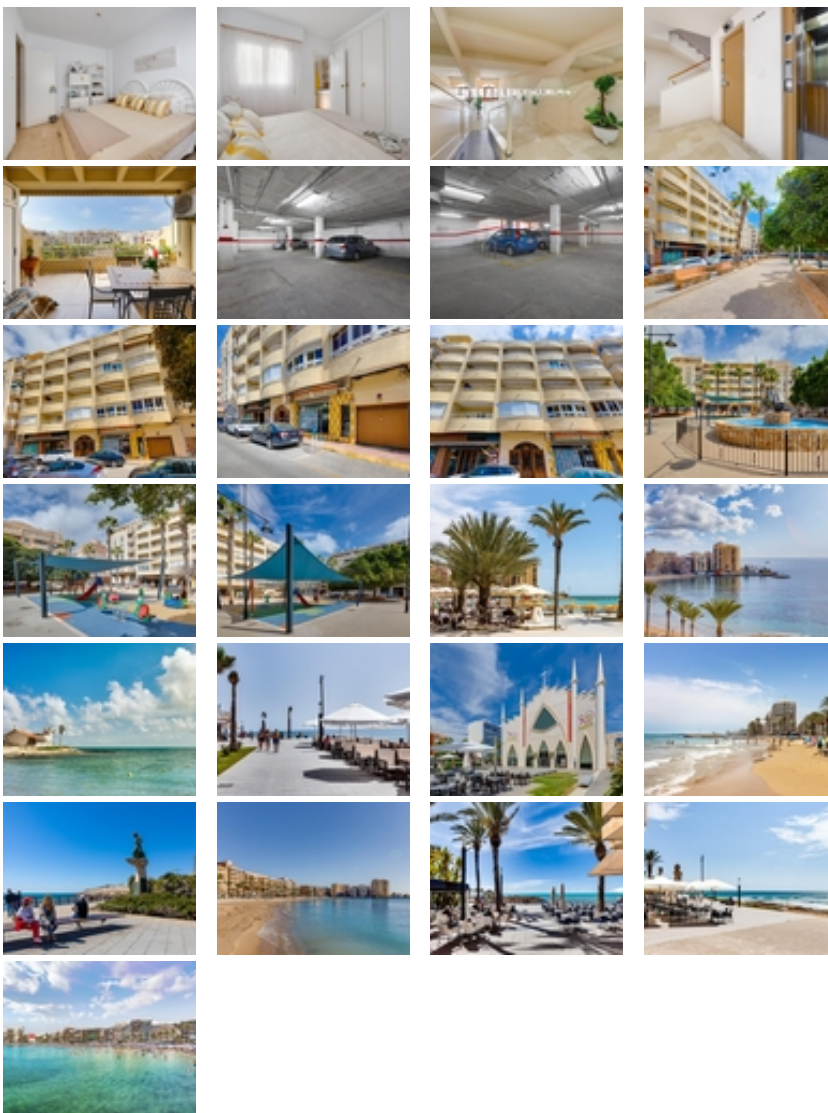


Ref. N:ER2-03946/866

€ 219 990

- Bedrooms: 2
- Bathrooms : 2
- S: 80m²
- Design and Interior
 - built-in wardrobes
 - Furniture
- Layout and decoration
 - Storage room
 - Floor heating
- Territory
 - Elevator
- Views
 - View to sea
- Distance
 - Beach:300 m. m.





Imagine waking up every morning to Mediterranean light streaming through your windows and unobstructed views of the Marina Española park. This bright penthouse, located on the top floor and offering complete privacy with no neighbors above, provides the perfect combination of tranquility, comfort, and location.~~Its southeast orientation fills every room with natural light year-round, while its terrace becomes the ideal spot to relax, enjoy the weather, or share special moments outdoors.~~Designed for maximum convenience in the city center, the property includes:~~A private parking space, so you can forget about circling around looking for parking.~~A spacious storage room, an increasingly valued and hard-to-find extra space.~~The sea and amenities just around the corner. Located only 300 meters from Playa del Cura, this home allows you to enjoy authentic Mediterranean living within walking distance. Restaurants, cafes, supermarkets, and the vibrant seafront promenade are all within easy walking distance, in one of Torrevieja's most sought-after and dynamic areas.~~Whether as a permanent residence, a holiday home, or a smart investment, this penthouse offers unique features: unobstructed views, a garage, a storage room, abundant natural light, and an exceptional seaside location.~~An immaculate property, ready to be enjoyed from day one.~