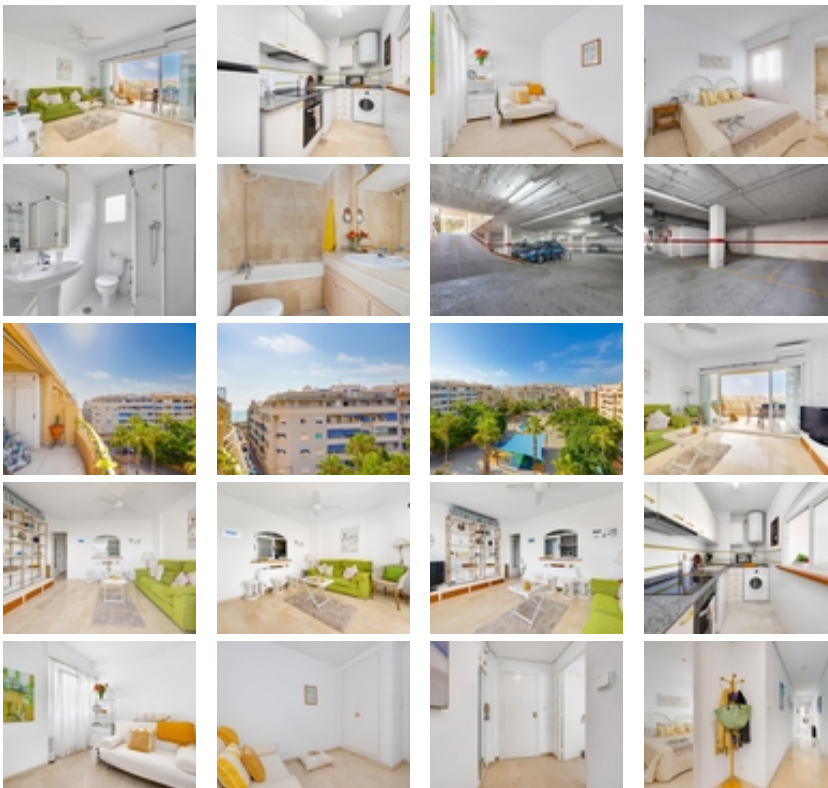


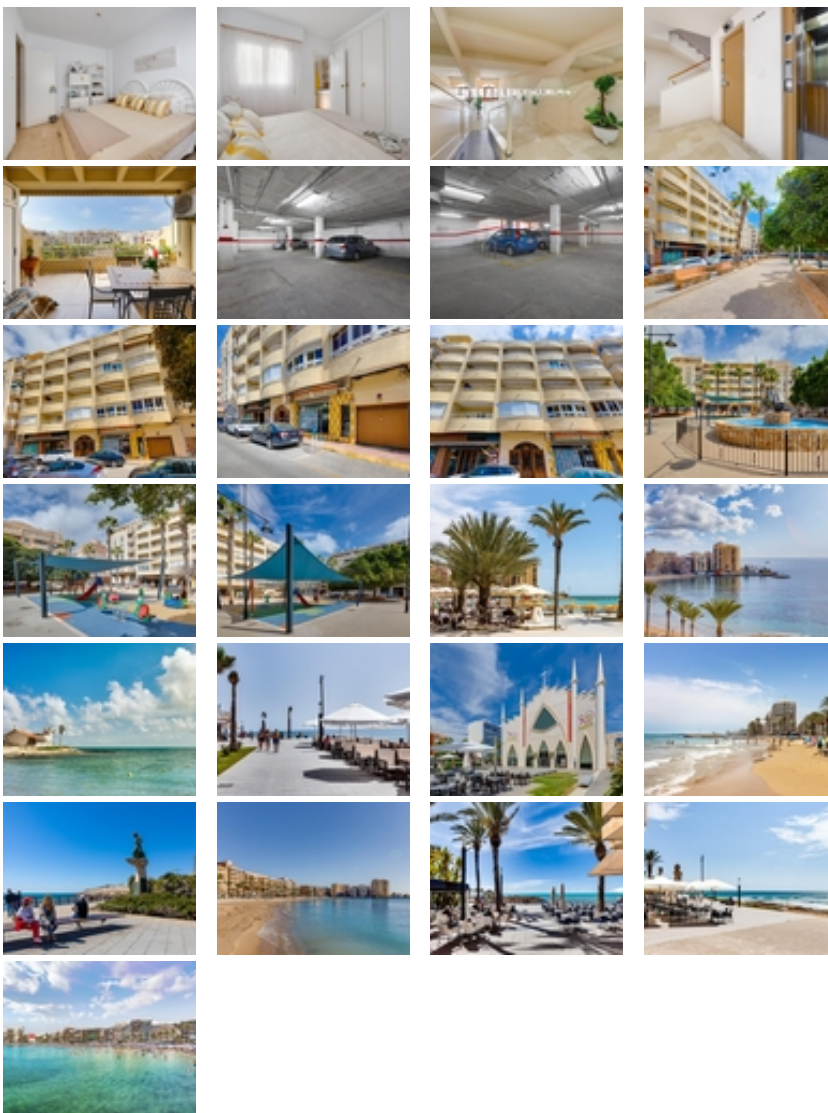


Ref. N:ER2-03946/866

€ 229 990

- Bedrooms: 2
- Bathrooms : 2
- S: 80m²
- Design and Interior
 - built-in wardrobes
 - Furniture
- Layout and decoration
 - Storage room
 - Floor heating
- Territory
 - Elevator
- Views
 - View to sea
- Distance
 - Beach:300 m. m.





Imagine waking up every morning to the Mediterranean light streaming through your windows and unobstructed views of Marina Española Park. This bright penthouse, located on the top floor with no neighbors above, offers the perfect combination of tranquility, comfort, and location.~~Its southeast orientation fills every room with natural light year-round, while the terrace is the ideal place to relax, enjoy the weather, or share special moments outdoors.~~The property also includes a private parking space and a large storage room, two increasingly valued amenities in the heart of Torrevieja.~~Located just 300 meters from Playa del Cura, you can enjoy all the amenities within walking distance: restaurants, cafes, supermarkets, and the seafront promenade, in one of the city's most sought-after and vibrant areas.~~Whether as a primary residence, a second home, or an investment, this penthouse offers rare and desirable features: unobstructed views, a garage, a storage room, abundant natural light, and a prime beachfront location.~~A property to enjoy from day one.~