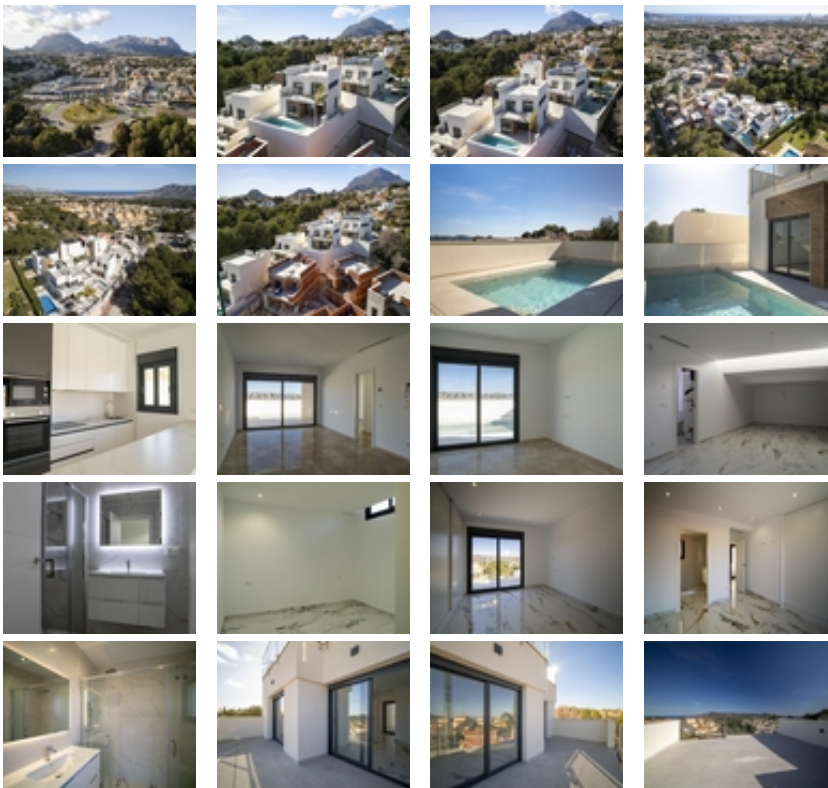


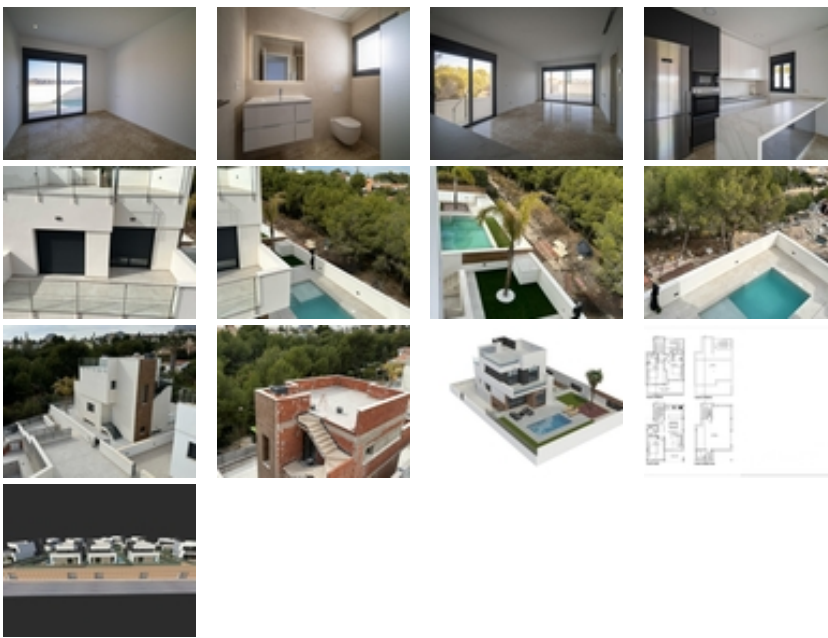


Ref. N:N6430/7515

€ 600 000

- Bedrooms: 3
- Bathrooms : 4
- S: 141m²
- Land: 213m²
- Design and Interior
 - built-in wardrobes
- Layout and decoration
 - Basement
 - Storage room
- Territory
 - Garage
 - Community Garden
- Distance
 - Beach:6 km. m.





NEW BUILD VILLAS IN LA NUCIA ~ ~ New Build Residential of comfortable and luxurious villas with private pools in La Nucia. ~ ~ Villas consist of 3 large double rooms with fitted and lined wardrobes. One room is on the ground floor and the other two on the first floor. ~ ~ It consists of 4 completely finished bathrooms with glass screens, porcelain toilets and thermostatic taps in showers, one on the first floor, another in the garage and the other 2 en suite in the rooms on the first floor. ~ ~ Bright living room with large windows that give access to the private plot with pool and artificial grass where you can enjoy and relax. ~ ~ Fully equipped American kitchen with wall and base units, high-end appliances and an island with base units, SILESTONE countertop with built-in stainless steel sink and designer stainless steel extractor hood. ~ ~ Installation of Air Conditioning and Heating through AEROTHERMAL ducts with 2 independent machines (dual zone). ~ ~ Comfort and design PORCELANOSA provide exclusive finishes, such as floating floors, natural stone floors and top quality stoneware. The entire Villa has interior and exterior LED lighting and electric shutters. ~ ~ Residential located in an exclusive area of great quality and with all the comforts; terrace, solarium, private garage for 2 vehicles, garden areas, urbanization, pool and everything you can imagine. ~ ~ Residential committed to the environment, equipped with solar panels for the production of domestic hot water, LED lighting and THERMAL-ACOUSTIC insulation. ~ ~ ~ La Nucia is a municipality in the comarca of Marina Baja, Alicante. It borders the municipalities of Altea, Callosa d'En Sarrià, Benidorm, Polop and L'Alfàs del Pi. ~ ~ La Nucia is located in a fruit valley between Benidorm and Callosa d'En Sarrià, 3 km from the coast of Altea. The urban center is on a promontory overlooking the Mediterranean Sea, 51 km north of Alicante and 8 km north of Benidorm. ~ ~ DISTANCES: ~ - Access from highway A. ~ - 5 minutes from Terra Mitica. ~ - 5 minutes from the ELIANS School. ~ - 5 minutes from supermarkets, cafes and all kinds of services. ~ - 10 minutes from Benidorm Beach. ~ - 15 minutes from Playa del Albir. ~ - 20 minutes from Guadalest Castle. ~ - 40Km from Alicante-Elche Airport. ~