



Modern Apartments with Stunning Vineyard
Views in Hondón de las Nieves

+34 966 932 436

+34 622 222 939

Ramon Gallud, 171, Torrevieja 03182

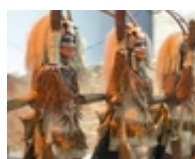
<http://www.talmarproperty.com/>



Ref. N:N8770/7515

€ 175 000

- Bedrooms: 1
- Bathrooms : 1
- S: 56m²
- Design and Interior
 - built-in wardrobes
- Territory
 - Elevator
- Distance
 - Beach:37 km. m.



Modern Apartments with Stunning Vineyard Views in Hondón de las Nieves~~Stylish New-Build Apartments in a Peaceful Valley Setting~Discover these contemporary apartments in Hondón de las Nieves, a charming town nestled in a picturesque valley surrounded by olive groves and almond trees. This exclusive residential complex offers 1, 2, and 3-bedroom apartments, all designed to provide comfort, energy efficiency, and breathtaking views of the Vinalopó vineyards.~~Located in the Vinalopó Medio region, this tranquil area is perfect for those seeking a relaxed Mediterranean lifestyle with easy access to nature and essential services.~~High-Quality Features for Modern Living~Each apartment is built with premium materials and finishes, ensuring both style and functionality:~~Spacious interiors with open-plan layouts.~Fully furnished kitchens with granite countertops.~High-end bathrooms with built-in cisterns and top-quality sanitary fittings.~Energy-efficient design with aerothermal water heating.~Pre-installed ducted air conditioning for year-round comfort.~Double-glazed aluminum windows with thermal insulation.~Reinforced security entrance door for added peace of mind.~Private garage on the ground floor included.~Elevator access for convenience.~Additionally, solar panels are installed on the rooftop to enhance energy efficiency and reduce utility costs.~~Prime Location in

Hondón de las Nieves~Hondón de las Nieves is a charming Spanish village known for its wine production, traditional culture, and scenic landscapes. The town features historic buildings, local markets, and natural walking trails, making it a fantastic location for both permanent living and holiday retreats.~~This new development is situated in a peaceful yet well-connected area, offering easy access to essential services and key locations:~~Alicante Airport – 30 km (30-minute drive)~Beaches of Alicante – 35 km (35-minute drive)~Elche – 20 km (20-minute drive)~Crevillente Natural Park – 10 km (15-minute drive)~Golf Courses – 25 km (30-minute drive)~~Your Perfect Home in the Heart of Alicante's Countryside~Enjoy the tranquility of the Hondón Valley while staying close to the vibrant cities of Alicante and Elche. Whether you're looking for a holiday home, an investment property, or a peaceful place to live year-round, these modern apartments are the perfect choice.~~Contact us today for more information or to schedule a viewing!~