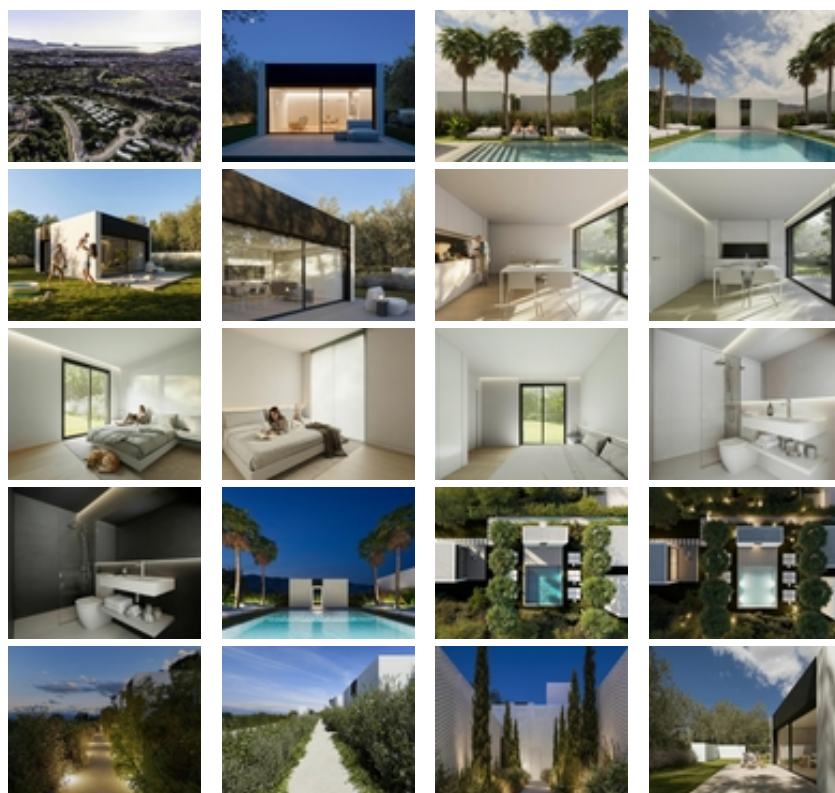




Ref. N:N9457/7515

€ 246 750

- Bedrooms: 2
- Bathrooms : 1
- S: 60m²
- Land: 65m²
- Design and Interior
 - built-in wardrobes
- Territory
 - Elevator
 - Community Garden
 - Public swimming pool
- Distance
 - Beach:5 km. m.





New Build Detached Villas in Alfaz del Pi near Albir Beach~~Exclusive Residential Project in Alfaz del Pi~This exclusive new build residential development consists of 19 detached villas located in Alfaz del Pi, in a modern and well planned residential area surrounded by high quality contemporary homes. Set approximately 5 km from the Mediterranean Sea, the project enjoys a privileged position between the coastline and the Alicante mountain range, offering a peaceful environment with excellent connections. It is an ideal option for permanent living, a second home or a smart investment on the Costa Blanca.~~A Privileged Setting Between Sea and Mountains~Alfaz del Pi is known for its relaxed lifestyle, international community and excellent quality of life. The municipality offers a perfect balance between nature and services, with the Sierra Helada Natural Park nearby and the beautiful Albir beach just minutes away. Benidorm is only 10 minutes by car, providing a wide range of shopping centres, restaurants, leisure venues and theme parks such as Terra Mitica and Aqualandia. The area also offers golf courses, water sports, cultural activities and a mild Mediterranean climate all year round.~~Thoughtful Design and Community Layout~The residential is arranged over two levels to adapt naturally to the terrain. The upper level is dedicated entirely to the homes and landscaped communal areas, creating a safe and quiet pedestrian environment. The lower level houses parking spaces, storage rooms and technical areas, discreetly integrated into the design. This separation ensures privacy, tranquillity and a car free living experience within the residential area.~~Modern Villas with Private Gardens~The villas are distributed on one level and offer one or two bedrooms with one bathroom. Each home features a contemporary design with clean lines, large windows and an independent entrance. Spacious terraces of approximately 17 m2 connect seamlessly with the living areas, while private gardens range from 46 m2 up to 200 m2, ideal for outdoor living. All homes include one private parking space, with storage rooms available as an optional extra.~~Communal Areas and Quality Specifications~Residents can enjoy a beautifully designed communal swimming pool with solarium, surrounded by landscaped gardens that create a calm and inviting atmosphere. The homes include a fully equipped kitchen in white matte finish with black worktop, air conditioning by split units, aeration system for hot water, reinforced security entrance door and bathrooms with fitted furniture and shower screens. An elevator connects the parking level with the residential area for added convenience.~~Key Distances~Albir beach is approximately 5 km away. Benidorm is 6 km. Alicante city is 49 km. Alicante Airport is around 62 km. Several golf courses are within 15 to 20 km.~~Your New Home on the Costa Blanca Awaits~Enjoy privacy, modern design and an exceptional location in Alfaz del Pi. Contact us today for more information or to arrange a viewing of these exclusive new build villas.~