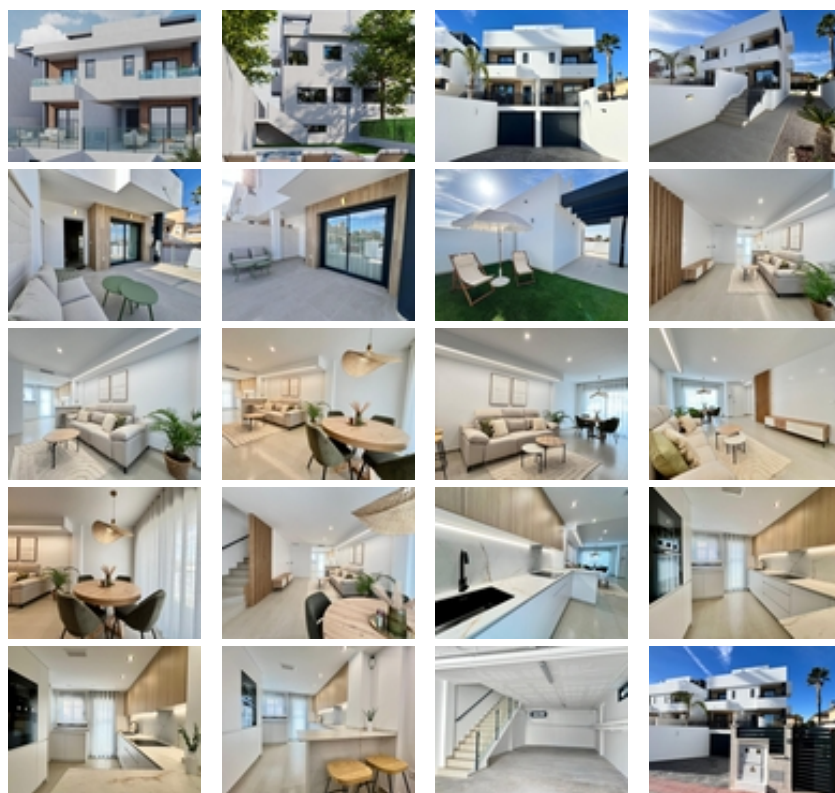


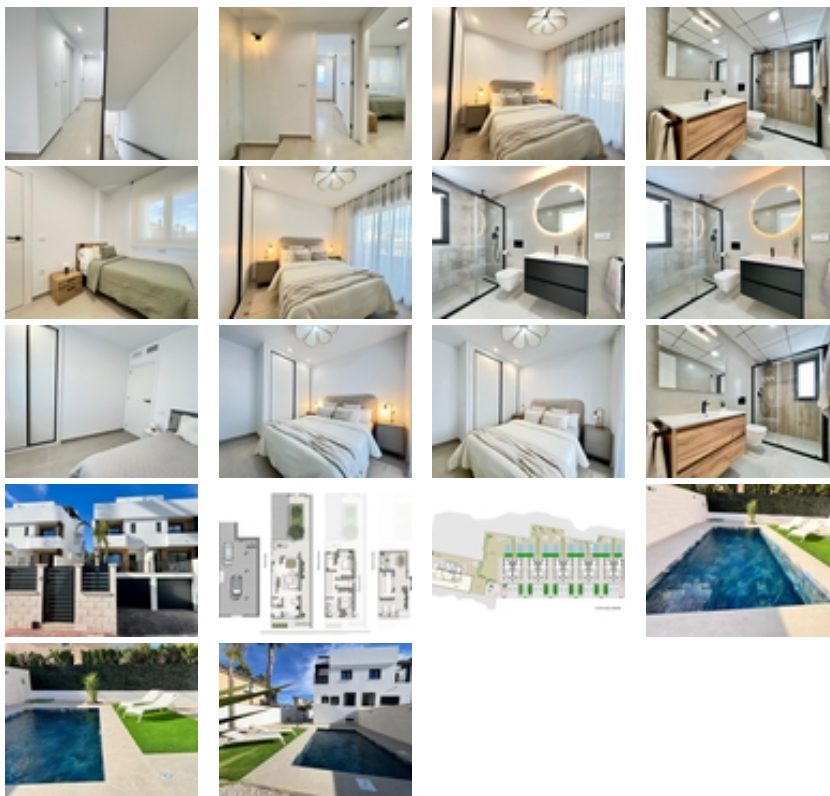


Ref. N:N9522/7515

€ 298 000

- Bedrooms: 3
- Bathrooms : 2
- S: 222m²
- Land: 90m²
- Design and Interior
 - built-in wardrobes
- Layout and decoration
 - Basement
 - Storage room
- Distance
 - Beach:32 km. m.





Modern New Build Semi Detached Villas in Benferri

Alicante~~Exclusive New Development in Benfis Park~Discover this new promotion of 10 modern semi detached villas located in Benfis Park, Benferri, in the heart of the Vega Baja region of Alicante. This charming town offers a peaceful residential atmosphere with well kept streets and a welcoming community, ideal for families, retirees or anyone seeking a relaxed lifestyle under the Mediterranean sun. Benferri combines rural charm with excellent access to nearby towns, beaches and major transport links.~~Spacious Villas with Private Solarium~Each villa offers a total built area of 222 sqm and is distributed over three floors plus a private solarium. The basement level includes a garage with space for two cars and a storage room. The ground floor features a bright open plan living and dining area with a modern kitchen, a laundry room and a guest toilet, with direct access to a terrace that surrounds the home. On the first floor there are three bedrooms and two bathrooms, one of them ensuite, as well as two terraces serving two of the bedrooms. The top floor offers a private solarium of approximately 39 sqm, perfect for sunbathing, outdoor dining or relaxing with open views.~~Modern Features and Optional Pool~The villas come with a fully fitted kitchen including electrical appliances, and pre installation for ducted air conditioning. A private swimming pool is available as an optional extra, allowing buyers to further personalize their home. The design focuses on comfort, functionality and natural light, creating a contemporary living environment ideal for year round living or holiday use.~~Living in Benferri Vega Baja~Benferri is located just a few minutes from Orihuela and benefits from quick access to the AP 7 motorway, making travel to the Costa Blanca beaches, Alicante Elche Airport and the main shopping and leisure areas fast and convenient. The surrounding landscape is characterized by fertile farmland, gentle hills and Mediterranean scenery, offering a sense of wellbeing and connection to nature. The town provides all essential services including supermarkets, schools, sports facilities and a lively local atmosphere throughout the year.~~Distances to Points of Interest~Orihuela 8 km~Guardamar del

Segura beach 25 km~La Finca Golf Resort 18 km~Vistabella Golf 14 km~Alicante Elche Airport 45 km~Port of Torrevieja 32 km~Shopping center Zenia Boulevard 30 km~~Your New Home in the Costa Blanca~These new build semi detached villas in Benferri offer generous space, modern design and a strategic location close to beaches, golf courses and key services. Contact us today to receive more information or arrange your private viewing.~