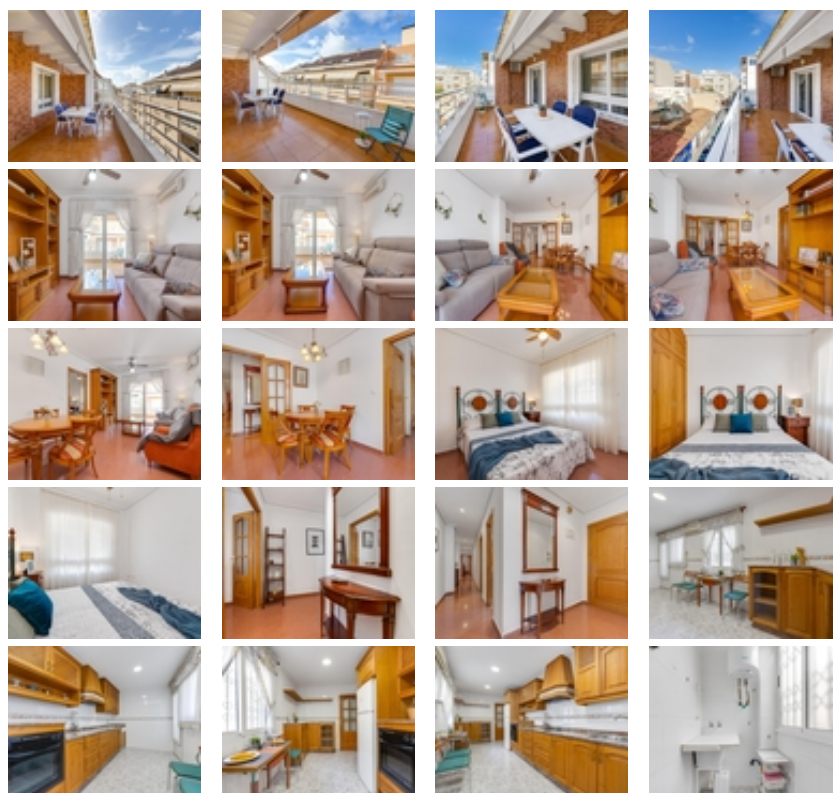


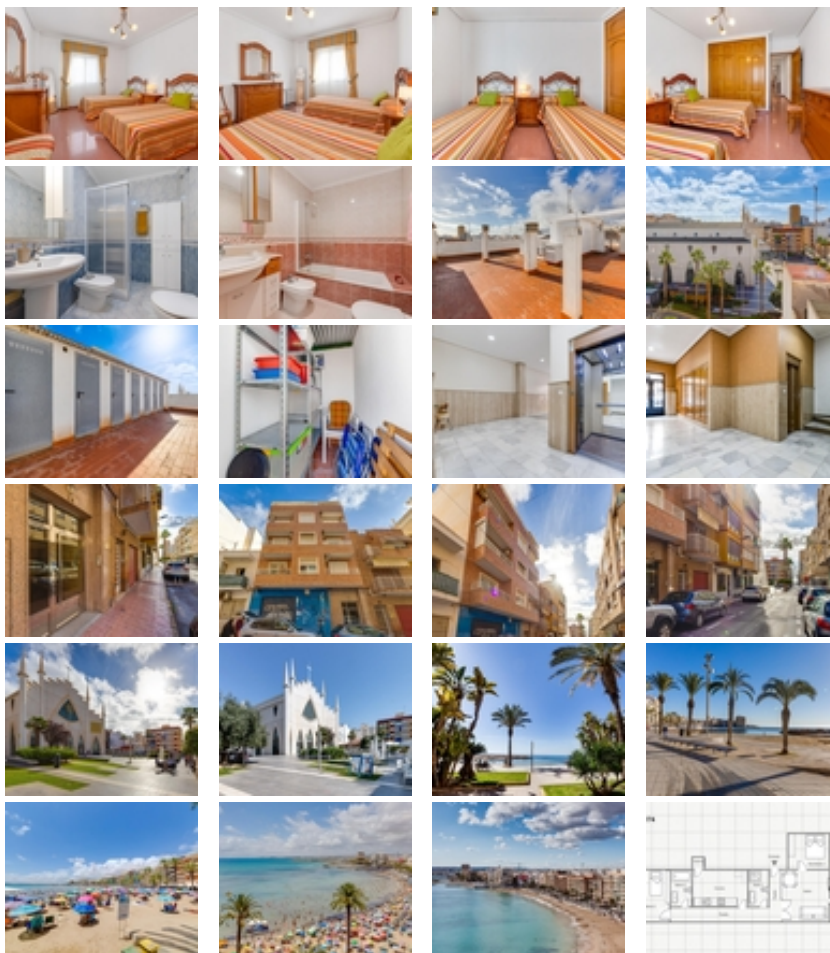


Ref. N:NA174/9576

€ 228 990

- Bedrooms: 2
- Bathrooms : 2
- S: 110m<sup>2</sup>
- Design and Interior
  - built-in wardrobes
  - Equiped Kitchen
  - Furniture
- Layout and decoration
  - Storage room
- Territory
  - Elevator
- Views
  - View to sea
- Distance
  - Beach:200 m. m.





We present to you this charming penthouse apartment located in the heart of Torrevieja, just 200 meters from the beach and 30 meters from the Ermita de Torrevieja, surrounded by all necessary amenities such as supermarkets, bus stops, seaside promenades, restaurants, bars, beaches, and more.~~The property, located on the fourth floor with an elevator, offers a beautiful panoramic view thanks to its height. The building also has access for people with reduced mobility and an elevator.~~The apartment is distributed into two spacious double bedrooms, two full bathrooms, a fully equipped independent kitchen with access to a small utility gallery, and a cozy living-dining room with direct access to an impressive terrace that is sunny all day long due to its orientation—perfect for relaxing and enjoying the views.~~Additionally, the building offers a communal solarium where the private storage room of the apartment is located, providing extra storage space.~~Don't miss this opportunity to live in a prime location near the sea, with all conveniences within reach. Ideal for enjoying the best lifestyle in Torrevieja!~